



# *Digestive System*

*By Amy*

# Table of contents

▲ The main parts of the Digestive system

▲ How the fruit go through the Digestive system

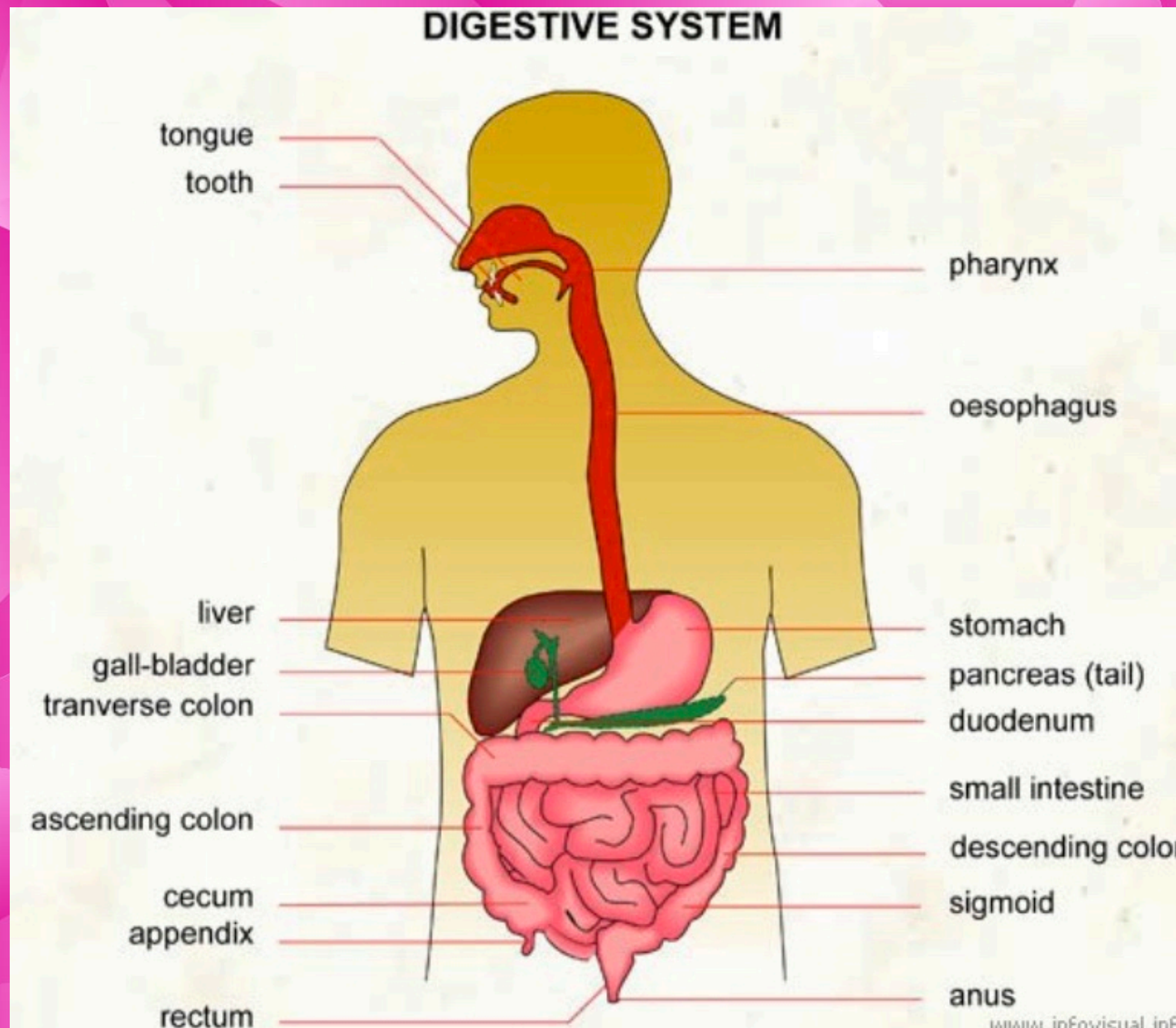
▲ Digestive time line

## The main parts of the Digestive system

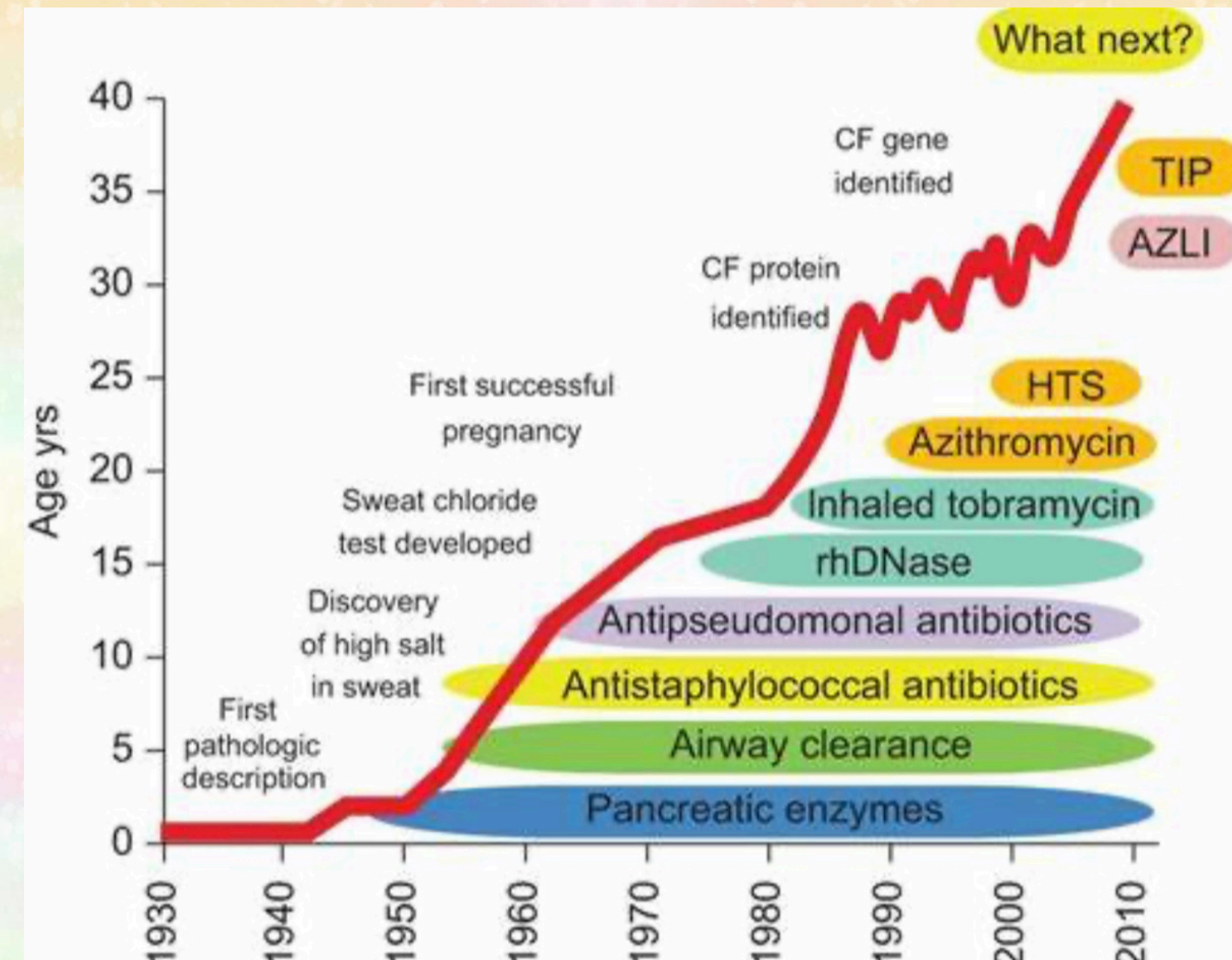
- The food is chewed up inside the Mouth.
- The muscles in the oesophagus push swallowed food into the stomach.
- Swallowed food is broken down into creamy chyme.
- The nutrients enter the bloodstream
- Waste in the Small intestine is absorbed into the large intestine.



# How the fruits go through the Digestive system



# Digestive timeline





# Connections

•Circulatory system: In the Small Intestine, the nutrients go into the bloodstream. So it is connect to the Digestive system.

•Skeleton system: The skeleton put the organs in the Digestive system in the right place.



## Bibliography

- ❑ Fregman, B and Frucht S. "Chapter 8. Digestive System." *Medical Terminology: A Living Language (5<sup>th</sup> edition)*. 2005.
- ❑ Medicine.Net. *Gastroesophageal Reflux Disease (GERD, Acid Reflux, Heartburn)*. [http://www.medicinenet.com/gastroesophageal\\_reflux\\_disease\\_gerd/article.htm#gerd\\_facts](http://www.medicinenet.com/gastroesophageal_reflux_disease_gerd/article.htm#gerd_facts). 15 October 2013.
- ❑ Medline Plus. *Nasogastric feeding tube*. <http://www.nlm.nih.gov/medlineplus/ency/patientinstructions/000182.htm>. 14 October 2013.
- ❑ Medline Plus. *Peptic Ulcer*. <http://www.nlm.nih.gov/medlineplus/ency/article/000206.htm>. 15 October 2013.
- ❑ Paulev-Zubieta. *Chapter 22: Gastrointestinal Function and Disorders*. *New Human Physiology*. <http://www.zuniv.net/physiology/book/chapter22.html>. 15 October 2013.
- ❑ Shlamovitz et al. *Nasogastric Tube*. <http://emedicine.medscape.com/article/80925-overview>. 14 October 2013.
- ❑ U.S. Department of health and Human Services. *National Digestive Diseases Information Clearinghouse (NDDIC)*. <http://digestive.niddk.nih.gov/ddiseases/pubs/gerd/#GERD>. 14 October 2013.
- ❑ Wise Geek. *The Digestive System*. [www.wisegeek.com/how-does-the-digestive-system-work.htm](http://www.wisegeek.com/how-does-the-digestive-system-work.htm). 14 October 2013
- ❑ Web MD. *Digestive Disorders Health Center- Aspartate Aminotransferase (AST)*. <http://www.webmd.com/digestive-disorders/aspartate-aminotransferase-ast>. 14 October 2013



Thank  
You

